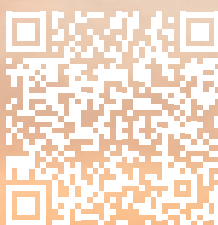




# HOLIDAY ON WHEELS

CYCLING AND DRIVING TOURS AROUND ASSENS



VISIT**ASSENS**

Get inspired for your cycling and driving trips – find routes through the beautiful landscapes along the Little Belt coast. With marked cycling routes, stunning viewpoints, great accommodations, ferries, and friendly locals, Assens is a fantastic place for a holiday.





# WELCOME TO ASSENS



## THE BEST CHOICE FOR YOUR TOUR

Assens is a great place to explore by bike or car. It's easy to navigate, and most routes take you along smaller roads.

Located on West Funen, in the heart of Denmark, Assens allows you to reach everything within a few hours. However, you may also want to stay and enjoy a holiday filled with:

- Beautiful child-friendly beaches
- Rolling hills
- Deep forests
- Unique attractions
- Cozy towns with proud traditions
- Activities and cultural experiences

## OVERVIEW OF TOUR SUGGESTIONS

Whether you prefer two or four wheels, we have half-day and full-day trip suggestions that will take you into nature and to some of our most wonderful spots.

- The trip to Helnæs
- Herregårdsruten in Assens
- Historical experiences
- Culture & nature
- The Vissenbjerg area

Read more, see the routes, and start exploring at your own pace.



## CHARGE YOUR E-BIKE ON THE GO

We offer several convenient charging stations where you can easily recharge your e-bike while enjoying everything we have to offer.

Charging stations can be found at:

- Helnæs Lighthouse
- Agernæs Harbour
- Willemoes' Plads in Assens
- Sandager Næs

*Charging is free of charge.*



# BÅGØ ON TWO WHEELS



## BÅGØ IS THE ONLY INHABITED ISLAND IN ASSENS MUNICIPALITY

**About Bågø:** Bågø is a small island in the Little Belt with only 25 inhabitants.

While Bågø can be windswept and harsh in winter, it becomes an idyllic paradise when spring arrives. Nature lovers can enjoy the peaceful surroundings for days, exploring the island's many natural treasures.

As Bågø is a designated bird sanctuary, there are excellent opportunities to observe birdlife from the island's two bird hides.

Bågø features flat landscapes with scenic views of the Little Belt, Funen, and Jutland. Cycling routes take you through the city with well-preserved farms and out to breathtaking natural areas and bird reserves. Several trails invite you to park your bike and explore on foot.

**Bågø city:** At the center of the island lies the charming, well-preserved city, which dates back to the 1200s. The original village layout has been maintained, with large farms lining the wide main street. Though no formal land redistribution has occurred, five farms have relocated due to fire or lack of space. Over the years, various service businesses such as a grocery store, dairy, and smithy have appeared among the farms, though these have since closed.

A small local history museum remains in the city.

**Bågø Church:** Built in 1861, Bågø Church was strategically placed so that Count Wedellsborg, who made a significant financial contribution to its construction, could have an unobstructed view of it. The church interior is simple yet features ornate chandeliers and the ship model "Fredericus Quartus," donated by a Copenhagen resident as penance for eloping with a girl from Bågø.

**Transport to Bågø:** The ferry from Assens to Bågø takes about 30 minutes.

It accommodates around 50 passengers and a small number of cars.

**Routes on Bågø:** On Bågø, you can explore four different cycling or hiking routes:

- Red route: 4 km
- Blue route: 4.5 km
- Green route: 2 km
- Yellow route: 5 km



Find the routes on Google Maps.



# THE TRIP TO HELNÆS

## THE MOST BEAUTIFUL COASTAL TOUR

1. **Start – Assens Harbour:** Follow Sdr. Ringvej past Assens Town Hall and the tall chimney to Thorøhuse, an old fishing village.
2. **Thorø:** Thorø is a scenic area with a fascinating history. Although its name suggests it is an island, Thorø has been connected to Funen since the mid-1990s due to sand deposits. You can park at Thorøhuse Forsamlingshus and take a lovely 3 km walk around the area. A small bridge leads you over a drainage canal from Noret into the peaceful landscape. Along the way, you can experience three charming colonies available for rent for everything from school camps to family gatherings. For nature lovers, the route offers fantastic views and winding paths. Look out over the Little Belt, where you can see Aarø at the entrance to Haderslev Fjord, Aabenraa further south, and Als on the horizon, as well as the dam leading to Helnæs.
3. **Saltofte:** Along Strandvejen, there are many great viewpoints over the Little Belt and several opportunities to walk along the beach.
4. **Sønderby Klint:** Sønderby Klint is a paradise for stone collectors. The cliff is almost 30 meters high and formed by glacial deposits. Here, you can see numerous springs, steep and bare walls, exposed slopes in landslides, and more or less stable grass-covered, herbaceous, or bushy slopes and valleys.
5. **Hagenskov Gods:** Take a small detour through this impressive estate. Hagenskov Gods, formerly known as Frederiksgave, is one of Denmark's finest Neoclassical buildings, built in 1775 by architect Rosenberg. The manor was the summer residence

of Prince Frederik VII when he was governor of Funen. The magnificent estate and its courtyard with a riding arena were used as a filming location for several scenes in the Danish TV series and film 1864, filmed in 2013. The manor can be viewed from the public road passing through the estate.

6. **Slots Alle:** Here, you pass the old castle mound and the historic thatched watermill. You can visit the dungeon, the only remaining part of the medieval castle that burned down in 1741. Note: This part of Slots Alle can only be accessed by bike or on foot.

On Helnæsvej, you pass the half-timbered farm "Flenstofte," built in 1746. A little further along, you will find the two hotels Gl. Brydegaard and Sinatur Gl. Avernæs, where you can enjoy lunch, a delicious dinner, or stay overnight.

7. **Helnæs:** Just after the causeway leading to Helnæs, you will find Bobakkerne, a massive ridge covered in a colorful sea of flowers during summer. Helnæs is an incredibly exciting peninsula with stunning nature, a vibrant cultural and artistic scene, and a fascinating history. Visit Galleri Langager in the old dairy at Ryet 13 and Helnæs Church. West of Helnæs town lies the vast meadow area Maden, where nearly 300 hectares of meadows and fields stretch behind the beach ridges towards the Little Belt. Accommodation options include Helnæs Camping or the beautiful holiday homes at Helnæs Mølle, which also features a restaurant.









# HERREGÅRDSRUTEN IN ASSENS

## MANORS, ESTATES & UNIQUE NATURE!

The "Herregårdsruten" Route is a journey through the Funen landscape spanning 660 km, divided into 14 stages. The two stages passing through Assens are a combined 82 km in length.

- 1. Billeskov Herregård:** The route starts in the north at Favrskov, leading you through Ørsbjerg Forest/ Brænde Ådal and past Billeskov Herregård and Barløseborg Golf Club, which also has a small restaurant.
- 2. Erholm Gods:** Continuing through Kerte, you will reach Erholm Gods, home to one of the best-preserved manor parks. The park is open from sunrise to sunset, with bicycle parking available at the entrance. On Saturdays, Erholm Food Market takes place in the old farm buildings near the manor. From Erholm Gods, the Herregårdsruten continues south towards Frøbjerg. A short detour will take you to Frøbjerg Bavnehøj, the highest point on Funen, offering breathtaking panoramic views. In summer, the Frøbjerg Festspil theater brings the hill to life with talented actors and joyful guests.
- 3. Krengerup Gods:** Further along the route, you will arrive at Krengerup Gods, where you can admire the beautiful buildings and gardens or take a walk along one of the forest trails. Entry to the park is free, and visitors must follow the marked paths. Krengerup Gods is also home to the The Flax Weaving Museum and Škoda Museum Denmark.
- 4. Brahesborg Gods:** This part of the route takes you past Brahesborg Gods, originally built as a Renaissance castle in 1656 by Jørgen Brahe, known as "The Little King of Funen." The manor was later rebuilt in a Neoclassical style in 1756 and purchased in 1828 by Supreme Court lawyer F.W. Treschow. It has remained in the family ever since. Take a short detour through the farm buildings and notice the stripes in the cobblestone paving near the main building - these are serfdom stalls. Each tenant farm had its designated space, allowing the estate steward to easily check if all workers had arrived for their duties.
- 5. Hagenskov Gods:** From Brahesborg, the route continues through Assens, heading south towards Thorøhuse and Hagenskov Gods. Hagenskov Gods, formerly known as Frederiksgave, is one of Denmark's finest Neoclassical buildings, built in 1775 by architect Rosenberg. The manor was the summer residence of Prince Frederik VII when he was governor of Funen. The magnificent estate and its courtyard with a riding arena were used as a filming location for several scenes in the Danish TV series and film 1864, filmed in 2013. The manor can be viewed from the public road passing through the estate. The journey continues past Dreslette Church and further south towards Løgismose.
- 6. Løgismose Gods:** Løgismose Gods dates back to the 14th century when it was known as Løuitz mosze. Since 1965, it has been owned by the Grønlykke family and has become a symbol of fine dining and the joys of gastronomy. Public access is not permitted, but the manor is still a beautiful sight from a distance. Nearby, you will pass Løgismose Forest, where you can visit Kafé Kammas, open during the summer season.
- 7. Damsbo Gods:** Continuing along Strandbyvej, you will pass Damsbo Gods, beautifully situated in the Funen countryside with views over Helnæs Bay. The manor is surrounded by forest, fields, and coastline and remains a private residence. From here, the route leads to Jordløse Hills, marking the transition into Faaborg-Midtfyn Municipality and the next stage of the Manor Route.

— Lenght: Approx. 82 km.

Find the route on Google Maps.







1

2

3

4

5

6

7



# HISTORICAL EXPERIENCES

## A WONDERFUL TOUR AROUND ASSENS!

- 1. Thorøhuse:** Follow Sdr. Ringvej from Assens towards Thorøhuse, a historic fishing village.
- 2. Thorø:** Thorø is a scenic area with a fascinating history. Although its name suggests it is an island, Thorø has been connected to Funen since the mid-1990s due to sand deposits. You can park at Thorøhuse Forsamlingshus and take a lovely 3 km walk around the area. A small bridge leads you over a drainage canal from Noret into the peaceful landscape. Along the way, you can experience three charming colonies available for rent for everything from school camps to family gatherings. For nature lovers, the route offers fantastic views and winding paths. Look out over the Little Belt, where you can see Aarø at the entrance to Haderslev Fjord, Aabenraa further south, and Als on the horizon, as well as the dam leading to Helnæs.
- 3. Å Strandvej:** Leads to a lovely bathing beach near the campsite.
- 4. The Dungeon at the Slot's Banke:** Further ahead, the route turns right through Slots Alle. Consider taking a detour to the large castle mound and see the old dungeon at the top of the mound. Here, Bishop Jacob Erlandsen was imprisoned in 1259.
- 5. Hagenskov Gods:** Hagenskov Gods, formerly known as Frederiksgave, is one of Denmark's finest Neoclassical buildings, built in 1775 by architect Rosenberg. The manor was the summer residence of Prince Frederik VII when he was governor of Funen. The magnificent estate and its courtyard with a riding arena were used as a filming location for several scenes in the Danish TV series and film 1864, filmed in 2013. The manor can be viewed from the public road passing through the estate.
- 6. Spinderhuset:** On the way to Ebberup, you will pass Spinderhuset, which once served as a gatehouse for the avenue leading to Hagenskov. From Prinsevej, turn left and then immediately right, crossing the old railway tracks.
- 7. Spindeskolen:** Continue along Ravnekærvej, where no. 48 once housed a 19th-century spinning school.
- 8. Gamtofte Church:** Cross Odensevej and continue through Voldbro to Gamtofte Church, dating back to the 12th century. Inside, you can admire beautiful modern stained-glass windows created by Peter Brandes, which fill the space with a unique light.
- 9. Memorial:** Opposite the church, a memorial stone honors an eight-man aircraft crew who crashed in May 1944. A propeller from the aircraft stands beside it. The Lancaster bomber, hit by Luftwaffe fire before dropping mines near Kiel, left a visible crater. The rectory and two farms burned, and the church's roof was damaged. Continue towards Assens.
- 10. Brahesborg Gods:** Brahesborg Gods, originally built as a Renaissance castle in 1656 by Jørgen Brahe, known as "The Little King of Funen." The manor was later rebuilt in a Neoclassical style in 1756 and purchased in 1828 by Supreme Court lawyer F.W. Treschow. It has remained in the family ever since. Take a short detour through the farm buildings and notice the stripes in the cobblestone paving near the main building - these are serfdom stalls. Each tenant farm had its designated space, allowing the estate steward to easily check if all workers had arrived for their duties.
- 11. Galleri Sulegården:** Galleri Sulegården is a fine example of the West Funen sulegård style. A sulegård is a traditional farmhouse with a unique timber construction featuring suler - large supporting beams that carry the roof structure. This design allows for high ceilings and rounded corners in the barn.



Find the route on Google Maps.

— Lenght: Approx. 28 km.



BÅGØ

Assens-Bågø (29 min)

START

ASSENS

THORØ

LILLEBÆLT

HELNÆS

Helnæs By



# CULTURE & NATURE

## ÅDALEN CHURCHES, BAUNEHØJ & VIEWPOINTS

Start på Assens Havn.

- Mariendal Beach:** Just beyond the harbour lies Mariendal Beach, featuring bathing piers. Continue along Mariendalsvej to the charming residential area with views of Båge.
- Aborg Nor (bicycle path only):** Further along, you will pass the dam and pumping station at Aborg Nor, where Puge Mølle Å flows into Little Belt. During the Viking Age, it was possible to sail up Puge Mølle Å, and the name Aborg indicates that a fortress once stood here. The dam was built in 1913 to prevent saltwater flooding from Little Belt. The area is rich in birdlife, including sea eagles, snipes, common sandpipers, and various ducks and geese.
- Sandager Næs Camping:** Take a detour to the campsite, where you can enjoy traditional ice cream cones, play mini golf, or try the high jumper. Continue down to the water, where you can explore the area by bike or on foot.
- Baunet:** Turn right at Baunevej. On the left, you will find Baunet, a beacon hill featuring a shelter and a bonfire site at the top. At the foot of the hill, there is a picnic area with tables, benches, and a playground. On the other side of the road stands Tvingbjerg rear lighthouse, a black-painted tower. The surrounding valley is home to extensive vegetable farming, including asparagus, onions, strawberries, peas, potatoes, cabbage, and corn, which are sold in season at Torup Bakkegård's farm shop.
- Sandager Church:** From the hilltop road, you get a view of Puge Mølle Ådal, including Sandager and Barløse Churches. The spire of Sandager Church was installed as a navigational marker by the Danish Lighthouse and Buoy Service. Follow Langemosevej and Barløsevej. Inside Sandager Church, you can see a Madonna statue carved by Claus Berg in the early 1500s. Continue right on Sandager Kirkevej, cross Middelfartvej, and proceed to Barløse Church.
- Barløse Church:** Perched high above the landscape, Barløse Church dates back to the 12th century and is one of the earliest Romanesque churches. The church's hilltop location also makes it an official maritime landmark. From here, you can take a detour to Barløseborg Golf Club. Then, follow Langstedgyden, turn right onto Bæringvej, and then left onto Barløsevej.
- Holevad Church:** On the left-hand side, you will pass Holevad Church. From Middelfartvej, continue onto Bækagervej and Jørgen Brahesvej towards Brahesborg.
- Brahesborg:** The route passes Brahesborg Gods, originally built as a Renaissance castle in 1656 by Jørgen Brahe, known as "The Little King of Funen." The manor was later rebuilt in a Neoclassical style in 1756 and purchased in 1828 by Supreme Court lawyer F.W. Treschow. It has remained in the family ever since. Take a short detour through the farm buildings and notice the stripes in the cobblestone paving near the main building - these are serfdom stalls. Each tenant farm had its designated space, allowing the estate steward to easily check if all workers had arrived for their duties. Turn left onto Brahesborgvej and admire the impressive suspension bridge over the moat.
- Galleri Sulegården:** Galleri Sulegården is a fine example of the West Funen sulegård style. A sulegård is a traditional farmhouse with a unique timber construction featuring suler - large supporting beams that carry the roof structure. This design allows for high ceilings and rounded corners in the barn.

— Length: Approx. 32 km by bike.

— Length: Approx. 36 km by car.

Find the route on Google Maps.







# THE VISSENBJERG AREA

## ADVENTURES FOR THE WHOLE FAMILY!

- Vissenbjerg Storkro:** Turn right onto Søndersøvej and continue straight ahead. You will then reach the parking area for Terrariet Reptile Zoo and Vissenbjerg Bakker on your right.
- Terrariet Reptile Zoo:** Here, you'll find one of Scandinavia's largest collections of exotic animals, including snakes, lizards, komodo dragons, turtles, frogs, scorpions, and spiders. The terrarium offers exciting exhibits that provide a unique insight into the lives, behaviors, and habitats of animals from around the world.
- Vissenbjerg Bakker (hills):** Embark on a hill tour of Funen. Here, at the top of Funen, glaciers have left behind a vast area of majestic hills, steep slopes, and deep valleys. At "Udsigten" (The view), you'll reach 129 meters above sea level. From here, you can enjoy a fantastic view of Brændholt Bjerg and Frøbjerg Bavnehøj.
- Frøbjerg Bavnehøj - Funen's highest point:** Continue to Frøbjerg and climb Frøbjerg Bavnehøj, Funen's highest point at 131 meters. From the top of the Bavnehøj, you'll be rewarded with an incredible view of Funen. The landscape was shaped during the Ice Age. In ancient times, bonfires (bavn) were lit on the hills throughout the country to communicate with one another. Bavnehøj is part of a characteristic dead-ice landscape. The hills are flat at the top with very steep sides and marked meltwater valleys. The 12-hectare area around Frøbjerg Bavnehøj is owned by the Danish Nature Agency and was protected in 1947. The area consists of two hills: Bavnehøj itself at 131 meters and the smaller hill at 122 meters.  
  
At Frøbjerg, there is also a memorial grove for the victims of the German occupation during World War II, as well as several other memorials. In the old

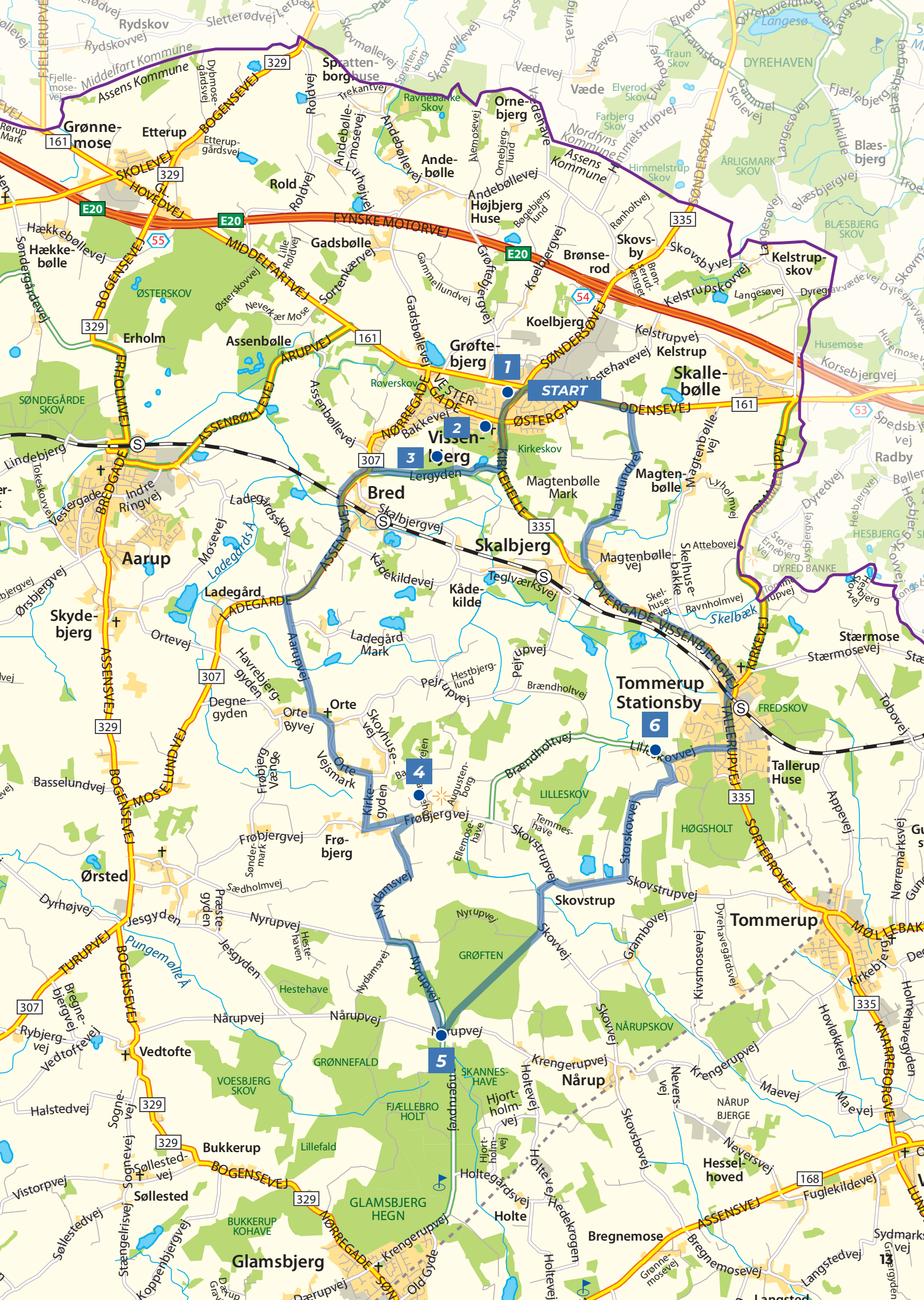
icehouse at the foot of Frøbjerg Bavnehøj, there is a small summer exhibition telling the history of Bavnehøj. Frøbjerg is named after the fertility god Frø or Frej. In ancient times, Frøbjerg was a sacred site, where springtime offerings were held. At the small hill lies the festival grounds, where the Frøbjerg Festival has held outdoor theater performances since 1986. Every year, the festival attracts nearly 25,000 people into the nature. Until 1910, the hills were grassy and treeless, used for grazing both sheep and cattle. In 1911-1912, the Bavnehøj Society planted many of the trees that are present today, but since then, many more trees and bushes have been planted and pruned to preserve the unique view. Today, the hills are grazed by sheep, which help keep the trees and bushes under control.

- Škoda Museum & The Flax Weaving Museum:** Continue to Krengerup Gods, where you'll find two fascinating museums. At Škoda Museum Denmark, you can view an impressive collection of Škoda models, showcasing the brand's development from its early years to the present. Next door, you'll find The Flax Weaving Museum (Hørvævmuseet), where you can dive into Denmark's textile history. The museum offers a fascinating look into the importance of flax production for Funen and the rest of Denmark. See the old looms in action, experience the craftsmanship up close, and learn about the entire process from flax plant to finished textile.
- Lilleskov Teglværk (brickworks):** Continue your journey towards Tommerup Stationsby. Take a short detour off Lilleskovvej to see Lilleskov Teglværk. The museum was founded in 1985 to preserve and operate the brickworks. It is open on only a few days throughout the year, but with prior arrangement, you can visit. Follow the route back to Vissenbjerg Storkro.



Find the route on Google Maps.

— Lenght: Approx. 31 km.





# GÅDEJAGT



## KAN I LØSE MYSTERIET I ASSENS?

Tag på en spændende gådejagt i Assens  
Købstad. En oplevelse for hele familien.

- 60 - 120 minutters byvandring med opgaver  
og - selvfølgelig - en præmie til sidst.
- Børn under 6 år er gratis.

Løs gåden om Peter Willemoes' forsvundne sabel.



← LÆS MERE HER

VISITASSENS

## KUNST i det gamle mejeri



### Kom til Helnæs!

Skiftende udstillinger med  
mange forskellige kunstnere  
og cafe midt i galleriet.

Udstillingsperioder  
og åbningsdage  
kan findes på

[www.gallerilangager.dk](http://www.gallerilangager.dk)



Galleri Langager  
Ryt 13, Helnæs, 5631 Ebberup



## TERRARIET

REPTILE ZOO

DU BLI'R  
**BIDT**  
AF DET!

OPLEV DE STØRSTE, FARLIGSTE,  
FLOTTESTE & GIFTIGSTE KRYBDYR &  
PADDER FRA HELE VERDEN

LARGE COLLECTION OF THE MOST AMAZING &  
FASCINATING REPTILES & AMPHIBIANS FROM ALL  
OVER THE WORLD

[WWW.TERRARIET.DK](http://WWW.TERRARIET.DK)







# Kafé Kamma S

på landet - ved vandet

- Smørrebrød med tvist
- Sandwich med varme
- Special-øl med krydderier
- Capulatte med skum
- Koncerter med kant
- Selskab & kursus med krudt i
- Udsigt du ikke glemmer
- Og en frisk dukkert

Åbningstid/Koncerter/kontakt  
[www.kafekammas.dk](http://www.kafekammas.dk) / Løgismose Skov 14, 5683 Haarby  
 Tlf 29659955 / [kamma@kafekammas.dk](mailto:kamma@kafekammas.dk)  
 Facebook og Instagram @kafekammas



## Besøg museerne på Krengerup

### Skoda Museet & Hørvævmuseet



**Skoda Museet**

- Historien om Skoda, helt fra dengang mærket hed Laurin & Klement
- Se de velholdte biler fra 1937 til 2002



**Hørvævmuseet**

- Vævningens historie og de maskindrevne jacquardvæve
- Skiftende særudstillinger
- Butik og café

Krengerupvej 30-32  
5620 Glamsbjerg







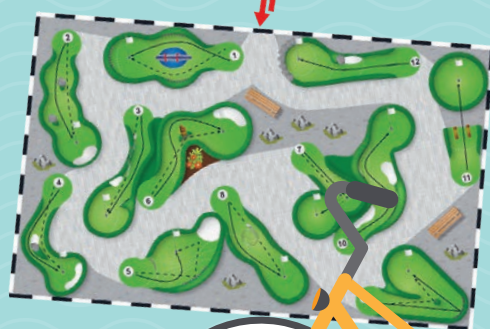

## Sandager Næs Camping – det perfekte pitstop på cykelturen



**Gammeldags isvafler og softice**  
**Butik med kolde og varme drikke**  
**Flot ny Minigolf bane**  
**Lækkert badeland · Highjumper**  
**Klappegeder og meget mere**



Tjek åbningstider  
 på sandagernaes.dk

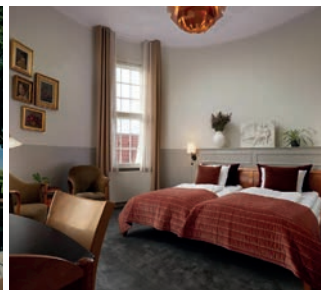


**City**  
 GOLF EUROPE  
 www.citygolf.com

**Sandager Næs Camping**



Strandgårdsvej 12 | DK-5610 Assens | Tlf. +45 64 79 11 56 | [www.sandagernaes.dk](http://www.sandagernaes.dk) | [info@sandagernaes.dk](mailto:info@sandagernaes.dk)



## Besøg Gl. Avernæs, nyd udsigten og forkæl dig selv...

På Agernæs, lige på kysten af Helnæsbugten og Det Sydfynske Øhav, ligger smukke Gl. Avernæs. Med udsigt til park, skov, strand og vand, mad i særklasse samt tjenere med nærvær, gør vi alt for at give dig en fantastisk oplevelse. Kom og nyd en frokost på terrassen, en middag i restauranten eller ren forkælelse med en overnatning på vores skønne hotel.

Helnæsvej 9 | 5631 Ebberup | Tlf. 6373 7373 | [glavernaes@sinatur.dk](mailto:glavernaes@sinatur.dk)